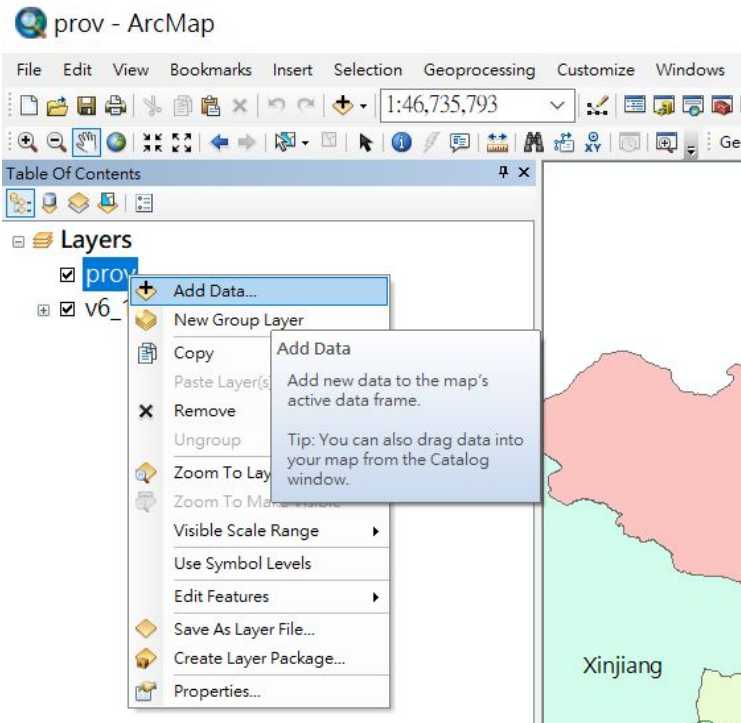


Using Land Survey Maps of China: A Cartographic Database in ArcMap/ArcGIS

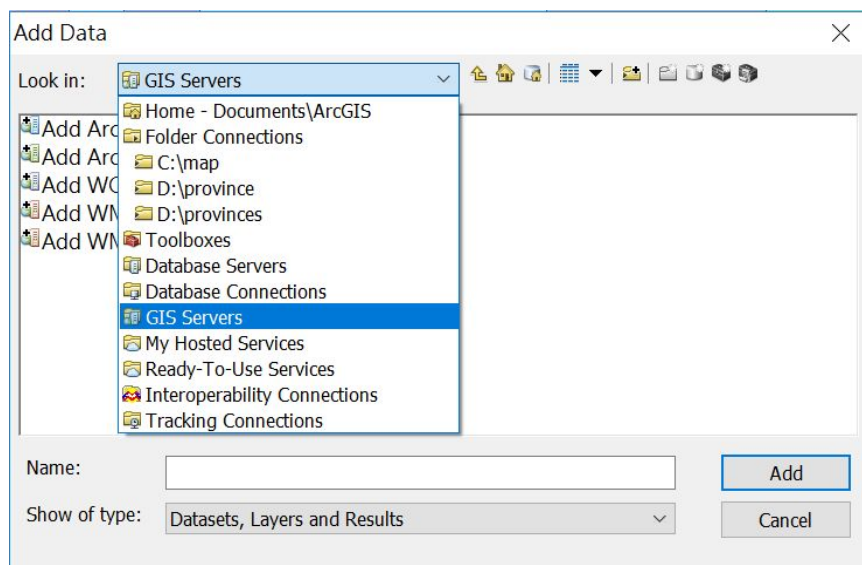
[Online version](#)

Adding Layers by [WMTS](#)([More Information](#))

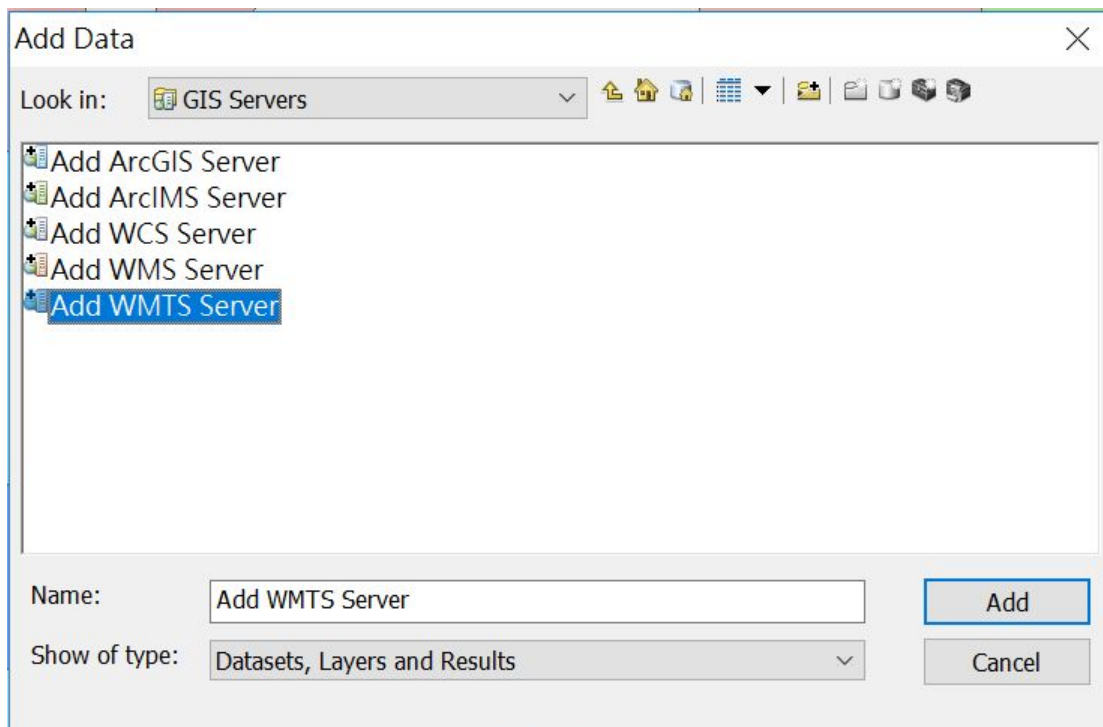
1. Add Data



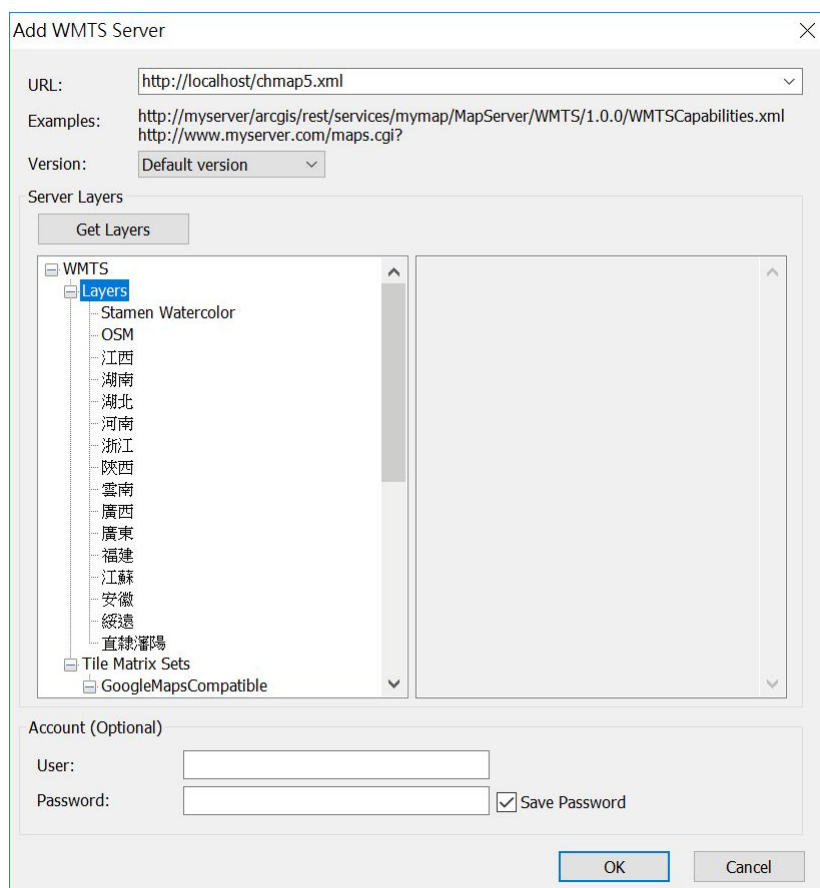
2. Select GIS Servers



3. Select "Add WMTS Server"

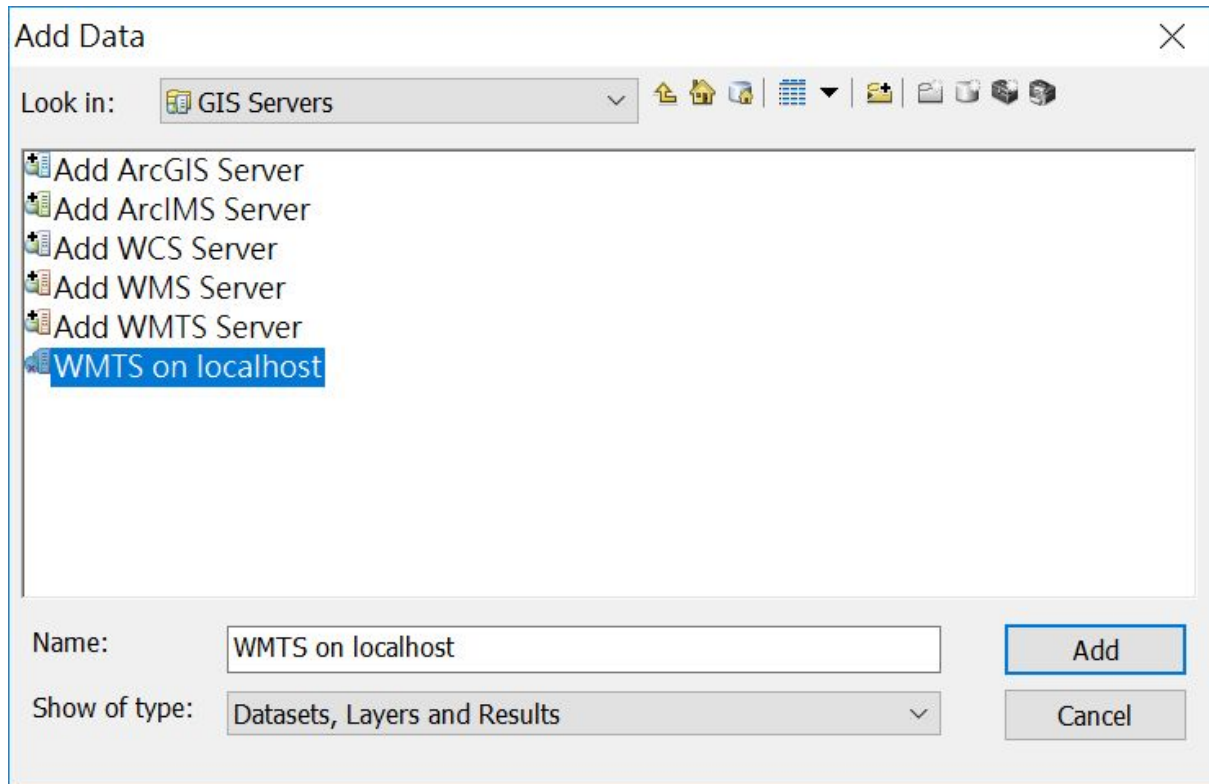


4. WMTS URL <https://chmap.mpiwg-berlin.mpg.de/chmap5.xml>

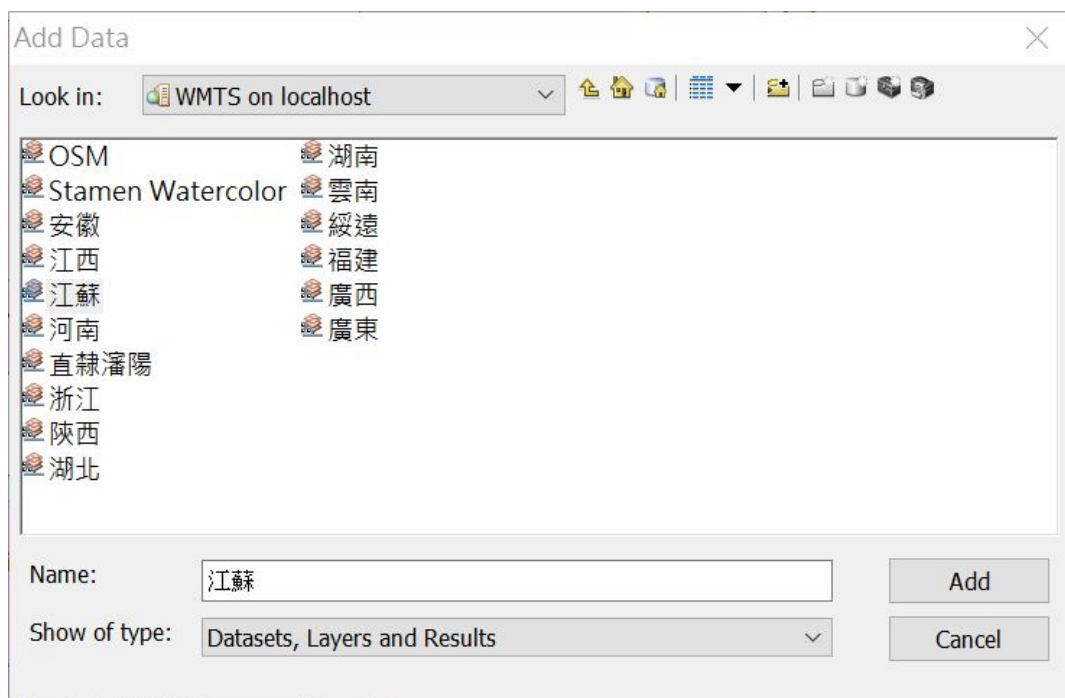


*Replace "<http://localhost>" to "<https://chmap.mpiwg-berlin.mpg.de>".

5. Build a WMTS Link



6. Select Layers



6. Load Layers in ArcGIS

